

Take the 14 Point Challenge and See for Yourself why

PERMETHOR



is Simply the **FINEST** Dust for
Professional Pest Managers!

The perfect choice for the toughest outdoor jobs. No odour, High performance, and Long-term residual action; plus all the safety features you demand - **GUARANTEED**

An exceptionally light dust formulation that flows further and deeper into cracks, crevices and voids where pests are found.	This ensures you are easily able to get the product where it will be most effective.
Permethor is a finer dust which gives you superior coverage of surfaces.	This makes it simple for you to apply the finest of coatings to surfaces. The finer the dust coating the more likely the pests are to make contact and pick-up the insecticidal deposit providing you with long term effective control.
Withstands degradation by heat.	To give you better results and fewer call-backs.
Very low mammalian toxicity.	Makes it ideal for even the most sensitive environments including hospitals, food processing plants, etc.
No odour and no noticeable on most target surfaces.	This means that, when correctly applied, your clients see little evidence of your actual treatment, simply a reduction in their pest problems.
Non-sensitising.	No sensitivity issues under normal usage.
Exempt from Poison Scheduling.	So you can assure your clients of the safety of your treatment.
Registered to control European wasps and feral honey bees.	So you can target the broadest spectrum of pests.
Up to six months or more residual activity.	So you can provide your clients with long-term insect control and minimise call-backs.
No mixing, no dilution.	Makes Permethor quick and convenient to use and speeds up your treatment process.
Rapidly metabolised in plants and mammals.	Making it safe to use in even the most sensitive environments.
Supplied directly to you by a Research & Development based International company.	This means you are dealing directly with the people who can support you the best, so you are guaranteed to receive the highest standard of support and care.
Manufactured to the highest quality standards with all ingredients and batches assayed for quality.	To give you guaranteed reliability and a superior quality product.
Ensystem's global chemistry development laboratory is located in Australia together with the largest support team in the pest management industry.	This means you are always sure of quality and local technical support for your usage of Permethor.



Your Ensystem Guarantee

If Permethor fails to meet or exceed your expectations, return the unused portion of the container, at our expense, and we will issue you with a full refund.

If you have a challenging situation, Ensystem guarantees to assist you with the matter and, where required, send one of our trained technical support specialists to visit the site with you.

Permethor always uses the highest quality materials to ensure optimal efficacy and safety.

Permethor Product Details

Active Ingredient: 10g/Kg permethrin

Insecticide Group: Pyrethroid

Formulation Type: Ready to use dust

Pests Controlled: Cockroaches, silverfish, ants, fleas, carpet beetles, bed bugs, spiders, bird mites, hide beetles, mushroom sciarid flies, potato moths, subterranean termites, European wasps and feral honey bees.

Permethor is a pyrethroid insecticide. This means it is modelled on natural pyrethrum, a natural extract of the pyrethrum daisy. Permethor was developed and formulated specifically for professional pest managers.

Safety

Since Permethor is a pyrethroid insecticide it displays relatively low levels of mammalian and avian (bird) toxicity.

For Optimal Results

Permethor dust is ideal for areas where liquid based formulations are not suitable. This includes large voids or areas where there is a risk of corrosion or spray drift to electrical equipment.

For best results in roof or wall voids apply using a power duster. Since Permethor is most effective when a fine coating only is applied, ensure you use the lightest application of dust and avoid "mounds" of dust as insects will not pass through these.

Permethor is also ideal for use as a flushing agent during inspections to identify cockroach and other pest harbourages.

For the most effective control use Permethor in association with a liquid spray to other pest harbourages and surfaces using products such as Deltathor, Cyperthor or Isophor H₂O.

Support Materials Available for You

Ensystem has technical support personnel located in all States of Australia.
MSDS produced to latest international standards.

Ensystem Australasia Pty Ltd

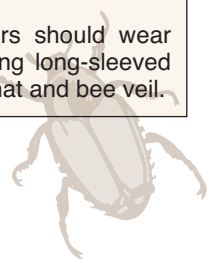
ABN: 53 102 221 965
2/47 Day Street North
SILVERWATER NSW 2128
Ph: 1800 420 144
Fax: (02) 9647 2189
Email: info@ensystem.com.au





Summary of Product Usage Rates (Please refer to registered label for full details)

SITUATION	PESTS	RATE	CRITICAL COMMENTS
Domestic, Institutional & Industrial Premises: • Food preparation and storage areas. • Living and sleeping areas.	Cockroaches, Silverfish	10 g/m ² applied with a powder blower	Blow powder into cracks and crevices. Pay particular attention to warm, dark corners around cookers, fireplaces, radiators, stoves, pipes, rubbish chutes and places where liquid sprays may not be used.
	Ants		Sprinkle the powder along runs, on and around nests. If ants are invading domestic premises apply powder to routes by which they enter. Repeat as necessary.
	Fleas and Carpet Beetles		Dust powder over floor, brushing into carpet pile and blowing into areas where flea larvae develop.
	Bedbugs		Apply powder to bedsteads, bedsprings, mattresses, floor coverings, upholstered furniture, cracks in walls, behind torn wallpaper, joints in woodwork and other harbourages.
Roof, floor and wall voids, and crawl spaces	Cockroaches, Silverfish, Ants, Fleas, Spiders, Carpet Beetles and Bird Mites (Ornithonyssus spp.)		Blow dust into all void areas, ensuring all surfaces are thoroughly treated. Repeat application if reinfestation occurs. Remove all bird's nests and introduce physical bird barriers to prevent reinfestation of bird mites.
Skin and hide preparation	Hide Beetles (Dermestes ater)		a) Place skins on drying racks and apply dust using a manual or motorized duster. b) Dust exposed edges of dried, baled skins.
Mushroom Beds	Mushroom Sciarid flies		Dust mushroom beds no more frequently than twice a week to control adult and larval flies. Discontinue dusting when mushrooms reach the size of a 10-cent piece. Observe
Seed potatoes	Potato moths (Phthorimaea operculella)	600 g/tonne or 30 g/50 kg bag of seed potatoes	Dust thoroughly immediately after harvest while filling storage containers. Treated seed potatoes are to be used only for sowing; do not use for food or feed purposes. Treated seed potatoes should be stored apart from other potatoes and bags or containers should be clearly marked to identify that the contents have been treated.
Trees and stumps in urban areas	Subterranean termites (Coptotermes spp.)	250 g per tree	Upon locating nest in tree or stump, drill 3 holes with a maximum diameter of 12mm. Apply dust directly to the nest using a carbon dioxide gas cylinder and trigger gun. After treatment holes should be coated carefully with a fungicide, e.g. copper naphthenate, and sealed with an appropriate caulking compound.
Wasp nests	European wasps (Vespula germanica)	125 to 250 g per nest	Use hand duster and apply powder through entrance holes (125-250 g/nest according to size of nest and number of entrance holes).
Bee Hives in wall cavities	Feral Honey Bees		Treat at night wherever possible. Operators should wear clothing protective against the wasp including long-sleeved overalls buttoned at wrist and neck, gloves, hat and bee veil.



Ensystem Australasia

is a wholly-owned subsidiary of Ensystem Inc. in the USA. Ensystem is dedicated to the supply of superior products to professional pest managers. As a research-based international company, Ensystem believes customer service is best developed by dealing directly with client pest managers.

Ensystem has research facilities in North Carolina, USA, and Melbourne, Australia. The Australian laboratories are a lead facility in the development of new chemicals on a global basis.

Ensystem has a background of over 75 years in pest management and a global team of dedicated pest management professionals. As a sister company to one of the largest pest control companies in the United States; Ensystem was founded to change the landscape of the pest control industry. To our knowledge, our effort represents the first time that pest control operators have ever started a global chemical company intent on developing and marketing professional products.

Further evidence of the Ensystem commitment is displayed through the team of dedicated professionals employed in Australia. Ensystem now has the largest technical sales support team of any research-based company. We are there to assist you should problems ever arise. Ensystem has eleven specialists in the field, with people located right around Australia, all qualified termite and pest professionals. Plus you have the support of our Australian laboratory complex for soil testing, chemical analysis, etc.

Ensystem develops and owns all its own formulations, performs QA and batch analysis checks on all batches of chemicals and guarantees the consistent quality of all materials sold.

Our dedicated, professional team are here to assist you in every aspect of your business.

Ensystem Australasia Pty Ltd

ABN: 53 102 221 965
2/47 Day Street North
SILVERWATER NSW 2128
Ph: 1800 420 144
Fax: (02) 9647 2189
Email: info@ensystem.com.au

