

Why BITHOR is Simply the Best Option..... for Ants, Ticks, Fleas & Turf Pests



The perfect choice for the toughest outdoor jobs. No odour, High performance, and Long-term residual action; plus all the safety features you demand - **GUARANTEED**

Heavy sand granular formulation penetrates the densest foliage to get the insecticide to where the pests are.	This makes Bithor the optimal product for external control of ants, fleas and ticks in gardens, lawns, around BBQ's, the perimeter of properties, etc.
Can be applied through standard granule applicators or shaker pack available from Ensystex.	This ensures easy and accurate application of Bithor in all circumstances.
Withstands degradation by sunlight & heat.	To give you better results and fewer call-backs.
Not affected by rain.	In fact Bithor can be activated by spraying with water. This also means you can apply Bithor in rainy weather so there is no need to cancel jobs due to inclement weather.
Not noticeable on most target surfaces.	Bithor sand granules mean your clients see little evidence of your actual treatment, simply a reduction in their ant problems.
Non-sensitising.	No skin sensitivity issues under normal usage.
Safe to plants.	Bithor can be safely applied to plants, lawns, shrubs for tick or spider control in particular, without any adverse effects.
Can be applied around Exterra Monitoring Stations.	This can help you resolve problems with ants infesting your termite monitoring program. This is the only granular product approved for this usage. It can also be placed underneath the Exterra Station. NB DO NOT apply directly to Station or interceptors.
Not classified as a scheduled poison.	So you can use Bithor with confidence in even the most sensitive environments.
No mixing, no dilution.	Makes Bithor quick and convenient to use and speeds up your treatment process.
Rapidly metabolised in plants and mammals.	Making it safe to use in even the most sensitive environments.
Supplied directly to you by a Research & Development based International company.	This means you are dealing directly with the people who can support you the best, so you are guaranteed to receive the highest standard of support and care.
Manufactured to the highest quality standards with all ingredients and batches assayed for quality.	To give you guaranteed reliability and a superior quality product.
Ensystex's global chemistry development laboratory is located in Australia together with the largest support team in the pest management industry.	This means you are always sure of quality, local technical support for your usage of Bithor.



Your Ensystem Guarantee

If Bithor fails to meet or exceed your expectations, return the unused portion of the container, at our expense, and we will issue you with a full refund.

If you have a challenging situation, Ensystem guarantees to assist you with the matter and, where required, send one of our trained technical support specialists to visit the site with you.

Bithor always uses the highest quality materials to ensure optimal efficacy and safety.

Bithor Product Details

Active Ingredient: 2g/Kg bifenthrin

Insecticide Group: Pyrethroid

Formulation Type: Ready to use sand granule

Pests Controlled: Ants, fleas, ticks and lawn pests.

Bithor is a pyrethroid insecticide. This means it is modelled on pyrethrum, a natural extract of the pyrethrum daisy. Bithor was developed and formulated specifically for professional pest management treatments.

Performance

Bithor contains bifenthrin, the unique structure of which makes it arguably the most broad spectrum and powerful of all the residual pyrethroids.

Safety

Since Bithor is a pyrethroid insecticide it displays relatively low levels of mammalian and avian (bird) toxicity.

Support Materials Available for You

Ensystem has technical support personnel located in all States of Australia.
MSDS produced to latest international standards.

Ensystem Australasia Pty Ltd

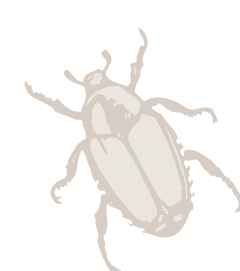
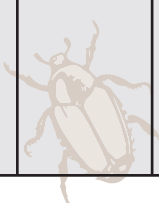
ABN: 53 102 221 965
2/47 Day Street North
SILVERWATER NSW 2128
Ph: 1800 420 144
Fax: (02) 9647 2189
Email: info@ensystem.com.au





Summary of Product Usage Rates (Please refer to registered label for full details)

SITUATION	PEST	RATE kg/ha	RATE kg/100m ³	CRITICAL COMMENTS
Turf (For example: lawns, commercial turf farms, parks, recreational areas, golf courses, bowling greens, sports fields)	Lawn Armyworm (Spodoptera mauritica) Sod Webworm (Herpetogramma licarsialis)	60	0.6	Broadcast Bithor with suitable application equipment to ensure uniform coverage over the treatment area. To ensure optimum control, irrigate the treated area with up to 4 mm of water immediately after application. Inspect treated areas for continuing activity. Reapply as required.
External surrounds of buildings and structures	Black ants, Coastal Brown Ants, Funnel Ants, Meat Ants, Sugar Ants, Stinging Ants only	60-220	0.6-2.2	<p>Apply granules to areas where ants are active. Where possible apply granules directly to the nest.</p> <p>Use the low rate for maintenance treatments or to control light infestations. Use the high rate for heavy infestations and for maximum residual control.</p> <p>Perimeter Application: Where perimeter pest control is being implemented apply Bithor in a two or three metre band, around and adjacent to the building or structure.</p> <p>Pad mounted electrical sites: To reduce or prevent ant mound building activity on electrical pads, uniformly distribute 60 to 220 grams Bithor per 10 m² of mounting pad. Where existing transformers are completely or partially filled with soil excavated by resident ants, remove any excess fill and level the remaining soil prior to application.</p>
	Fleas (Adults and Larvae) (Ctenocephalides spp.)	110-220	1.1-2.2	Flea larvae develop in the soil of shaded areas that are accessible to pets or other animals. For optimum results irrigate the treated areas with up to 10 mm of water immediately after application. Use higher application rates when treating areas with dense ground cover or heavy leaf litter.
	Ticks (Ixodes spp.)	110-220	1.1-2.2	Applications should be made in spring to control larvae and nymphs that reside in the soil and leaf litter. Do not make spot applications. Treat the entire area where exposure to ticks may occur. Use higher application rates when treating areas with dense ground cover or heavy leaf litter. Ticks may be reintroduced from surrounding areas on host animals. Retreat as necessary to maintain adequate control.



Ensystem Australasia

is a wholly-owned subsidiary of Ensystem Inc. in the USA. Ensystem is dedicated to the supply of superior products to professional pest managers. As a research-based international company, Ensystem believes customer service is best developed by dealing directly with client pest managers.

Ensystem has research facilities in North Carolina, USA, and Melbourne, Australia. The Australian laboratories are a lead facility in the development of new chemicals on a global basis.

Ensystem has a background of over 75 years in pest management and a global team of dedicated pest management professionals. As a sister company to one of the largest pest control companies in the United States; Ensystem was founded to change the landscape of the pest control industry. To our knowledge, our effort represents the first time that pest control operators have ever started a global chemical company intent on developing and marketing professional products.

Further evidence of the Ensystem commitment is displayed through the team of dedicated professionals employed in Australia. Ensystem now has the largest technical sales support team of any research-based company. We are there to assist you should problems ever arise. Ensystem has eleven specialists in the field, with people located right around Australia, all qualified termite and pest professionals. Plus you have the support of our Australian laboratory complex for soil testing, chemical analysis, etc.

Ensystem develops and owns all its own formulations, performs QA and batch analysis checks on all batches of chemicals and guarantees the consistent quality of all materials sold.

Our dedicated, professional team are here to assist you in every aspect of your business.

Ensystem Australasia Pty Ltd

ABN: 53 102 221 965
2/47 Day Street North
SILVERWATER NSW 2128
Ph: 1800 420 144
Fax: (02) 9647 2189
Email: info@ensystem.com.au

