

10 Reasons Why You'll be Glad You Use **DELTATHOR**

in Your Pest Business



The proven, high performance, quality insecticide that combines the most powerful residual action with the safety features you demand - GUARANTEED

Benefits

Supplied directly to you by a Research & Development based International company	This means you are dealing directly with the people who know Deltathor best, so you can be guaranteed to receive the highest standard of support and care.
Withstands degradation by sunlight, heat & once dry is unaffected by rain.	To give you a better result and fewer call-backs.
Manufactured to the highest quality standards with all ingredients and batches assayed for quality.	To give you guaranteed reliability and a superior quality product.
Highest quality suspension formulation	This ensures Deltathor stays in suspension in your tank longer than any other competitive product to give you optimal results.
Ensystem's global chemistry development laboratory is located in Australia together with the largest support team in the pest management industry.	This means you are always sure of quality, local technical support for your usage of Deltathor.
High quality water-based suspension concentrate.	To give you improved residual performance and no visible residues.
No hydrocarbon solvents.	Which means no worries about staining, no odour and no damage to your equipment, seals & pumps.
Approved for use indoors and outdoors, in food handling premises, hospitals, etc.	To give you maximum flexibility in your use of Deltathor.
Rapidly metabolised in plants and mammals	Making it safe to use in even the most sensitive environments.
High performance - Guaranteed.	So you can feel totally confident that you have a global, research based company standing beside you should any challenges arise.

Your Ensystem Guarantee

If Deltathor fails to meet or exceed your expectations, return the unused portion of the container, at our expense, and we will issue you with a full refund.

If you have a challenging situation, Ensystem guarantees to investigate the matter with you and, where required, send one of our trained technical support specialists to visit the site with you.

Deltathor is manufactured to the highest standards of quality. All ingredients and batches are tested to guarantee you a reliable, superior quality product.

Deltathor is guaranteed to meet or exceed the quality and performance specifications of the original (pioneer) registered product so you can be certain of the best possible performance in the field.

Deltathor always uses the highest quality materials to ensure optimal efficacy and safety.

Deltathor Product Details

Active Ingredient: 10g/L deltamethrin

Insecticide Group: Pyrethroid - This means it's modelled on natural pyrethrins, from the pyrethrum daisy.

Formulation Type: Suspension Concentrate

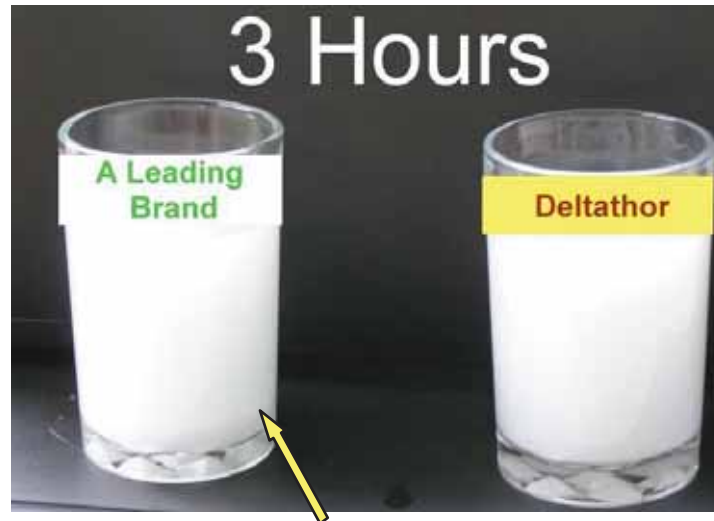
Pests Controlled: Cockroaches, spiders, ants, fleas, silverfish, bed bugs, bird mites, carpet beetles, clothes moths, stored product insects, quarantine pests, five-spined bark beetle, furniture beetles, auger beetles, powderpost beetles, flies and mosquitos.

Deltathor is the ideal product for treating pests of timber and stored product insects.



Safety

Since Deltathor is a pyrethroid insecticide it displays relatively low levels of mammalian and avian (bird) toxicity. As with all pyrethroids it is toxic to fish and must be kept out of waterways, dams, streams, etc.



Note how in the above photo you can see the residue settling out in a leading product whilst Deltathor remains fully suspended. This settling out is actually the deltamethrin active. So the high suspendability of Deltathor works for you by helping you make sure the active stays in suspension - so when you spray you always get optimal results. (Always agitate your sprayer before use.)

Deltathor is an aqueous (water-based) suspension concentrate. With suspension concentrates particle size is critically important. If the particles are too large the product will leave unsightly residues, if too small they will sink into porous surfaces. For this reason Ensystem uses a custom-built, highly refined double milling process to ensure a micro-fine particle size. These micro-fine particles are then more easily picked up by the insects, yet they will remain on porous surfaces to give you improved residual performance on even the most difficult surfaces such as concrete.

Ensystem then uses a sophisticated suspension system to suspend the particles in the water-based formulation and protect it from degradation and microbial / fungal attack. This is demonstrated in the above photo which shows the performance of the Deltathor when compared to the original Industry Standard product. This ensures that the deltamethrin in Deltathor remains suspended in your spray tank so whenever you spray you are placing the optimal amount of deltamethrin onto your treated surface. (Of course you should always agitate your spray mix prior to commencing a treatment program.) Since Deltathor is water-based and contains only the purest ingredients, you can be sure it will not cause staining, unless water alone would cause an issue.

And of course Deltathor comes with a written Quality Performance and Support Guarantee from Ensystem, your contractual agreement from Ensystem that we will be there to support you - ALWAYS!

Performance

Deltathor contains deltamethrin which remains arguably the most active of all the residual pyrethroids. This is because the deltamethrin in Deltathor is a pure, single isomer blend (Simplistically, an isomer is how the chemical is shaped). Different chemical isomers perform differently, and the blend in Deltathor is the most pure and insecticidally active giving you premium performance.

Deltamethrin has been registered in Australia for use by Pest Management Professionals since 1984, and personnel at Ensystem have been associated with the development and support of deltamethrin since before then, so you can be sure of quality advice and care.

Support Materials Available for You

Ensystem has technical support personnel located in all States of Australia. MSDS produced to latest international standards.

Ensystem Australasia Pty Ltd

ABN: 53 102 221 969

2/47 Day Street North

SILVERWATER NSW 2128

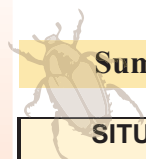
Ph: 1800 420 144

(02) 9647 2180

Fax: (02) 9647 2189

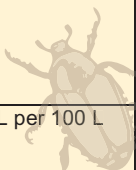
Email: info@ensystem.com.au





Summary of Deltathor Usage Rates

SITUATION	PESTS	RATE	CRITICAL COMMENTS
Domestic, commercial, industrial, and public buildings: including food processing establishments, shops, factories, ships, offices, schools, storerooms, hospitals, barracks, private houses and external areas associated with such establishments.		Initial treatment 150 mL	For use on non-porous surfaces: dilute with 5 L of water and apply as a coarse spray at a rate of 5 L of emulsion per 100 m ² not exceeding the point of run-off. For use on porous surfaces or for use through power equipment, dilute with 10 L of water and apply per 100 m ² of surface, not exceeding the point of run-off.
	Cockroaches	Maintenance treatments 75 mL	Conduct a thorough inspection and apply to known and potential cockroach harbourages. A barrier application around areas where cockroach infestations may be originating is also suggested. Where application of a spray is not suitable it is recommended that a suitably registered gel bait be applied.
	Web-spinning spiders		Directly spray spiders, their webbing and areas where spiders may hide. It is recommended that webbing be left in place for a few days after application to optimise efficacy.
	Non web-spinning spiders		Spray areas where spiders are known to occur.
	Ants		Where possible locate the nest and spray directly into nest entrances. Penetration of insecticide can be assisted by pre-wetting sandy and porous soils with water. A thorough soaking treatment with insecticide mixture is required to destroy the nest. If nest cannot be located then spray infested areas.
	Fleas		Clean and vacuum infested areas and dispose of dust collected in the garbage in a sealed plastic bag. Lightly spray infested areas concentrating on areas under furniture etc. Treat pets with a suitably registered veterinary flea control product. See also the note on application to carpets below.
	Silverfish		Direct spray to areas of potential infestation eg under skirting boards, and furniture where dark conditions may favour silverfish populations.
	Bed bugs		Treat cracks and crevices in bed frames and the adjacent walls.
	Bird mites		Treat infested areas. Inspect roof voids and remove any old bird nest material. A suitably registered dust product is recommended for treatment of roof void areas.
	Carpet beetles		Apply to infested carpets, particularly in areas of little or no traffic, and underneath windows where adult beetles may be entering the building. See also the note on application to carpets below.
	Clothes moths		Spray surfaces in areas where clothes are stored. DO NOT spray the clothes.
	Houseflies, mosquitoes	75 mL	Spray surfaces where flies and mosquitoes are known to rest. Flies - include external surfaces that are exposed to the morning sun. Mosquitoes - spray walls, awnings, fences and vegetated areas near to buildings. Note: A residual surface spray will only control those insects that alight on the treated surfaces.
	Stored product insect pests		The use of this product in the control of stored product pests should be considered as part of an integrated strategy to prevent development of insect populations. Best results will be obtained where good hygiene is maintained. Infested areas should be cleaned prior to application and regularly cleaned thereafter to reduce food sources for pests. When treating for beetle pests pay special attention to sheltered areas such as cracks and crevices, under furniture and equipment, floors, walls and shelves. Adult moths can be controlled by applying the product to walls and surfaces where the flying adult moths come to rest.
Cut flowers for export	Quarantine pests	250 mL per 100 L water	Flowers must be totally submerged in the diluted product for not less than 1 minute and then left to dry naturally for 2 hours.
Freshly felled pine logs prior to debark	Five-spined bark beetle	100 mL in 10 L water	Apply through knapsack or power sprayer at the rate of 10 L per 100 m ² of surface area. NB. For best results apply promptly after felling or sawing operations.
Freshly felled logs, poles and posts, and sawn timber incl. <i>in situ</i> timbers.	Furniture Beetles, Auger beetles, Powderpost beetles.		



Ensystem Australasia is a wholly-owned subsidiary of Ensystem Inc. in the USA. Ensystem is dedicated to the supply of superior products to professional pest managers. As a research-based international company, Ensystem believes customer service is best developed by dealing directly with client pest managers.

Ensystem has research facilities in North Carolina, USA, and Melbourne, Australia. The Australian laboratories are a lead facility in the development of new chemicals on a global basis.

Ensystem has a background of over 75 years in pest management and a global team of dedicated pest management professionals. As a sister company to one of the largest pest control companies in the United States; Ensystem was founded to change the landscape of the pest control industry. To our knowledge, our effort represents the first time that pest control operators have ever started a global chemical company intent on developing and marketing professional products.

In the face of an industry dominated by a few large chemical companies the registration of our termite bait Exterra Requiem Termite Bait totally revolutionised the professional pest management market around the world. The Exterra System is proof of what devotion to an idea by a small group of individuals working together can accomplish.

Now the time has come for the pest control industry to embrace our efforts and our products because together we can make a difference. We are of the opinion that for many years the industry has yearned for a time when there would be more vigorous, quality competition among suppliers for your business.

That time is now.

Further evidence of the Ensystem commitment is displayed through the team of dedicated professionals employed in Australia. Ensystem now has the largest technical sales support team of any research-based company. We are there to assist you should problems ever arise. Ensystem has eleven specialists in the field, with people located right around Australia, all qualified termite professionals. Plus you have the support of our Australian laboratory complex for soil testing, chemical analysis, etc.

Ensystem develops and owns all its own formulations, performs QA and batch analysis checks on all batches of chemicals and guarantees the consistent quality of all materials sold.

Our dedicated team are here to assist you in every aspect of your business.

Ensystem Australasia Pty Ltd

ABN: 53 102 221 969

2/47 Day Street North

SILVERWATER NSW 2128

Ph: 1800 420 144

(02) 9647 2180

Fax: (02) 9647 2189

Email: info@ensystem.com.au

